

autokitchen 23 is loaded with improvements across the board, including a new interface, expanded user preferences, new tools to improve the look of technical plans, a new and better organized print menu, and numerous catalog updates including new cabinet doors, and updated appliances, accessories, moldings and finishing materials.

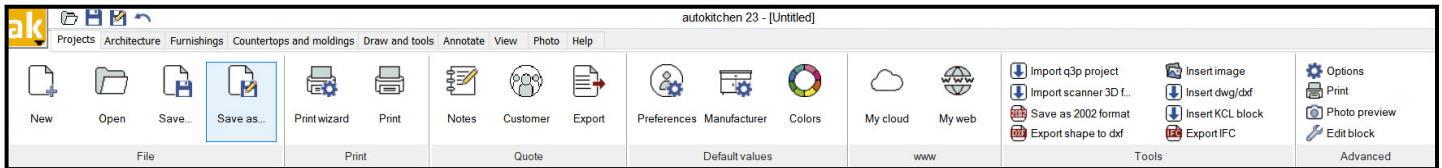


The main improvement areas of autokitchen 23 include:

- Expanded User Preferences, screen colors and line weights, including new options to specify the exact location of cabinet codes, cabinet numbers and cabinet dimensions in the floor plan.
- Faster cabinet placement. Center cabinets between other cabinets or between a cabinet and a wall automatically. Place cabinets rotated 90 degrees aligned on the back or front of another cabinet.
- Custom moldings and 2D hatches: A new menu of 2D hatches is now available, along with a custom molding function to design and place custom moldings anywhere in the design.
- New Print menu. The paper space has its own dedicated print menu with all the buttons available across the top.
- New Virtual Reality feature. Let your customer “walk” into your design by creating a virtual reality model in just a few minutes. The models reside in the cloud and are shareable via a link.
- Multiple catalog updates: New door styles, new appliances, new finishes and also a better way to visualize finishes for specific materials.

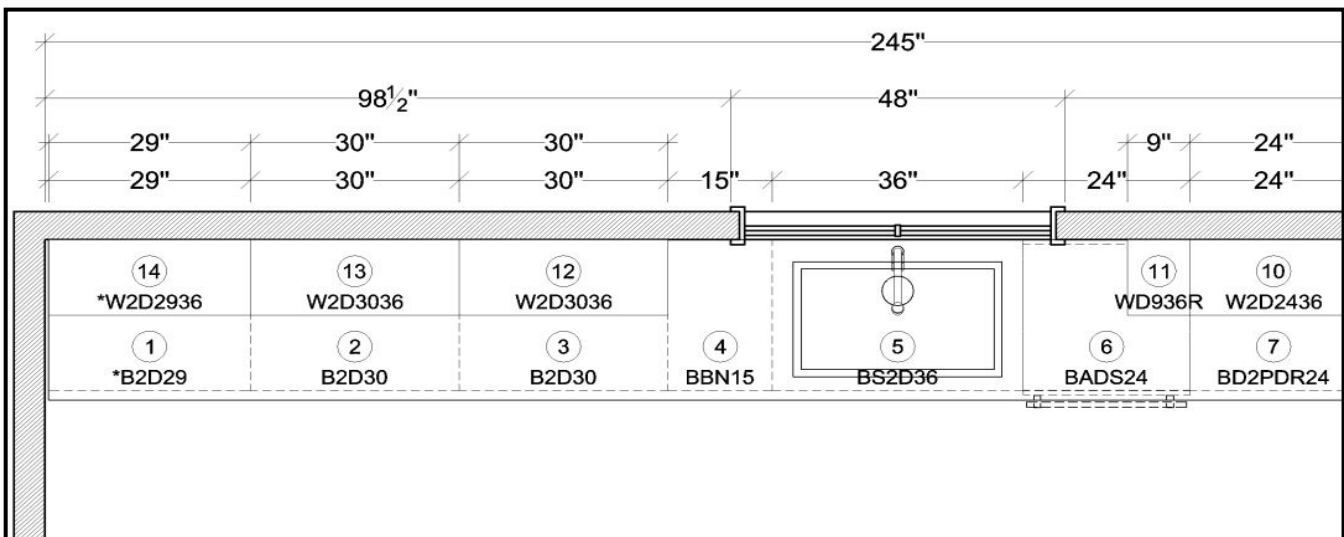
Interface

All program buttons have been updated favoring a modern, clean look.



User Preferences and Screen Colors

There are new preferences to specify the location of cabinet codes and cabinet dimensions, by type of cabinet. This adds flexibility and speed to floor plans.

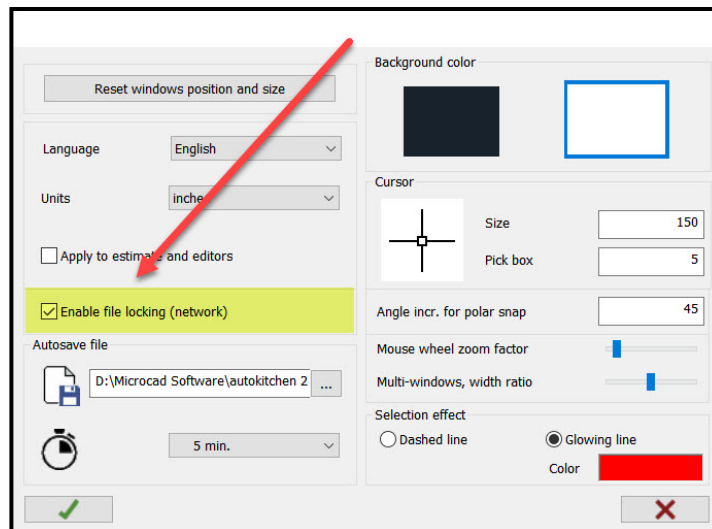


The screen colors table has been expanded to include colors for lines in paper space, as well as colors for text and dimensions in elevation views. There are also colors for cabinet legends. All of this makes the floor plans, elevations and cabinet legends more customizable.

| Paper | |
|------------|--|
| Dimensions | |
| Texts | |
| Shapes | |
| Lines | |
| Front view | |
| Dimensions | |
| Texts | |
| Legends | |
| Header | |
| Texts | |
| Symbols | |
| Lines | |

File Sharing Protection

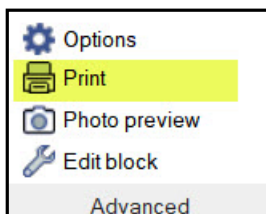
Protect your design work by locking up your file. This applies when designing in a local area network and prevents others from accessing your design files while you are working with them.



Line Weights

Line weights can be configured individually by element. Two different line weight configurations are available by default, Config 1 and Config 2. These configurations can be modified by the user.

Some new elements have also been added: Lines in paper space, dimensions and texts in elevation views and cabinet legends. The new line weights can't be appreciated on screen. They are visible on paper or on PDF documents.



| | Select linewidth set... | |
|--------------|-------------------------|--|
| Architecture | Config 1 Config 2 | |
| Walls | 0.30 mm | |
| Doors 3D | 0.13 mm | |
| Windows 3D | 0.13 mm | |
| Floor | 0.30 mm | |
| Ceiling | 0.30 mm | |
| Dimensions | 0.05 mm | |
| Texts | 0.05 mm | |
| 2D | 0.30 mm | |
| Wall hatch | 0.05 mm | |

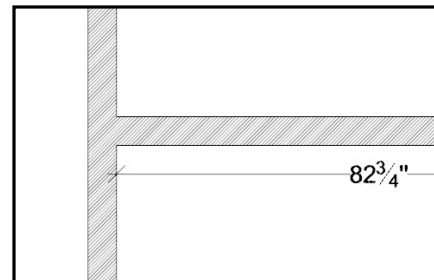
| Paper | |
|------------|---------|
| Dimensions | 0.13 mm |
| Texts | 0.05 mm |
| Shapes | 0.13 mm |
| Lines | 0.13 mm |
| Front view | |
| Dimensions | 0.05 mm |
| Texts | 0.05 mm |
| Legends | |
| Header | 0.05 mm |
| Texts | 0.05 mm |
| Symbols | 0.13 mm |
| Lines | 0.13 mm |

Architecture

The architectural accessories menu now includes buttons to move, rotate and copy them, providing additional flexibility when working with these objects.

In 2D, internal walls now can merge seamlessly with other walls without showing any lines between the merging walls.

Tool tips have been added to the Pillar section.



Cabinetry Placement: Other Insertions

Under 'Other insertions' there are now five new centering scenarios that will speed up cabinetry placement in certain situations. The first two buttons automatically center a cabinet:

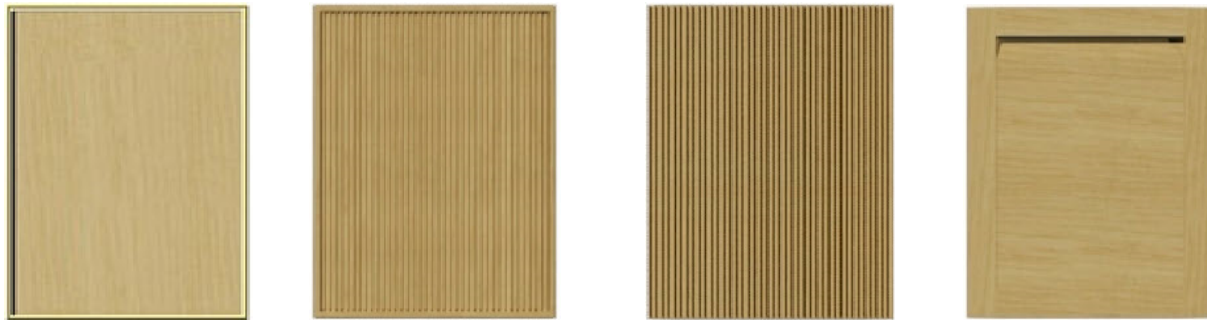
- Between another cabinet and a wall.
- Between any two cabinets previously placed on the same wall.

The next three new buttons are useful when creating islands where some of the cabinets are facing different directions or even when placing side panels aligned on the front or back of other cabinets.



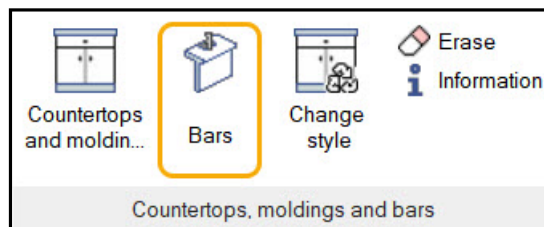
New Door Styles

There are four new door styles added to the door catalog: These are a slim frame door, a slim frame reeded door, a reeded door and an integrated door.

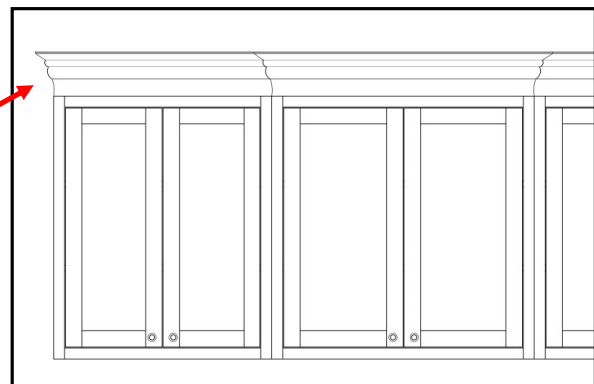
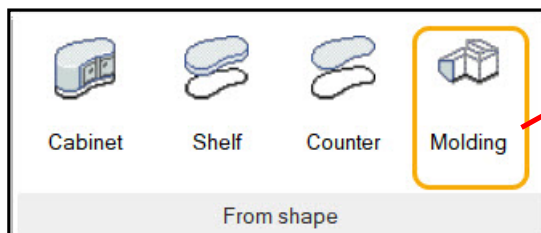


Bar Counters and Custom Moldings

A 'Bar' button has been added to the 'Countertops and Moldings' menu. There are several bar countertop profiles readily available. The bar counter can be inserted from a path previously drawn or by points.

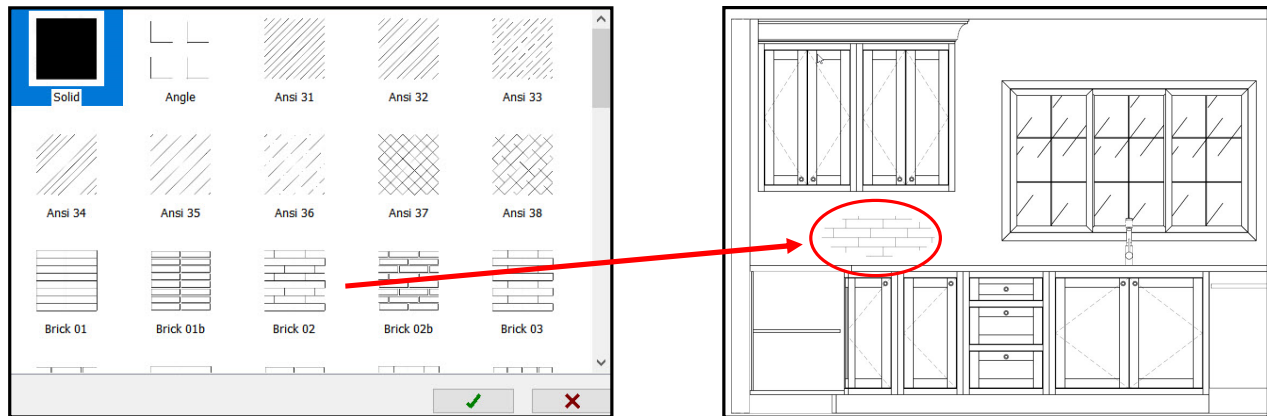


In the 'Draw and Tools' menu, there is now a 'Molding' from a shape button. This gives you the ability to create a molding profile from scratch and use it in your designs. Two shapes are required. One is the molding profile itself which needs to be a closed shape. The second shape is the path where the molding goes. This one is an open shape drawn counter-clockwise.



2D Hatches

In the 'Draw and Tools' menu, under 'Fill', there are now over sixty 2D hatches. They include hatches as varied as bricks, stone and wicker. The hatches require a closed shape to be filled. The selected hatch can be adjusted for scale and orientation. These hatches can be placed in floor plan and in elevation and they contribute to create a more customized floor plan or elevation view.



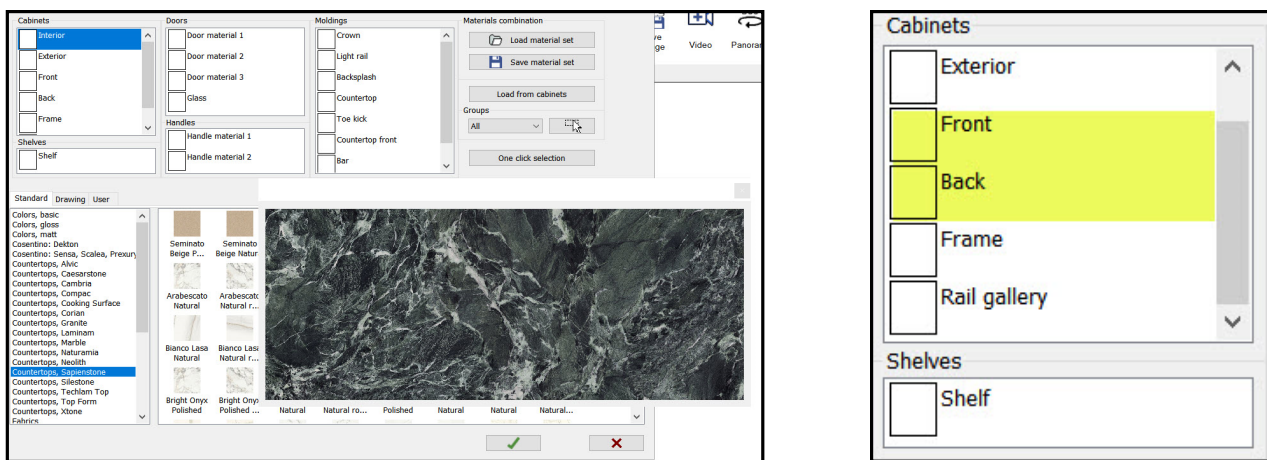
Cabinet Materials

In the cabinet materials area, three improvements make the task of applying materials easier:

When double-clicking certain materials, a larger image is generated to better appreciate the material. This is the case with countertop materials and with woods.

The active materials in a design file, which are the ones in the 'Drawing' tab, show the material image, the material name, and the category they belong to; for instance, 'Stonika Natura 18, Cosentino, Dekton'.

In the 'Change Cabinet Materials' window, the cabinet component list now includes 'Front' and 'Back'. This makes it easier to assign a material in cases where these components have a different finish.



Print Menu

Make your plans stand out by using the options available in the new Print menu. The new horizontal tool bar at the top of the print menu is specific to printing functions. In this new tool bar you can alter the line weights, insert color images, insert text, insert shapes, insert leaders and print.



Virtual Reality

Autokitchen 23 premieres the first installment of virtual reality. You can create a virtual reality model of your design in just a few minutes. The model can be visualized in a variety of devices, including using gogles. The user can walk around the space in any direction. Virtual models reside in the cloud and are shared via a link.



New Materials and Catalog Updates

Several appliance manufacturer catalogs have been updated, along with many material catalogs, to include the latest designs. Below is a sample list of the names.

